

NB IoT Network I/O Units

I/O

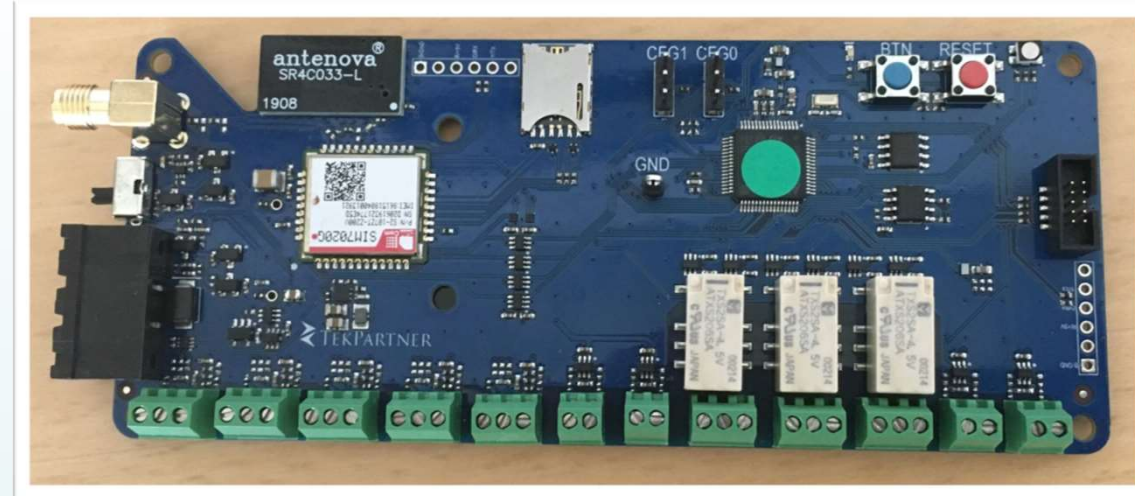
- 5 x Input (each: Analog, Counter or Binary Level capable)
- 7 x Output (2x TTL, 3x Relay, 2x PWM/TTL)
- 2 x Keys (User & Reset)
- 4 x Status LEDs (1x RGB, 1x G)
- 1 x TTL UART

Mobile Network:

- SIM7020G Worldwide NB IoT Release 14 (NB2) module
- External (SMA) Internal Board mounted Antenna
- Nano-SIM card holder

Power Supply

- External 5VDC or
- 3xAA (compartment on the back)



MCU:

- STM32G070 (64 MHz ARM Cortex M0+)

Memory:

- 36 KB RAM
- 128 KB Program FLASH
- 32 KB FRAM (i2c) – rapidly changes non-volatile persistent data
- 2 MB Data FLASH (spi) – rarely changes non-volatile persistent data

Cabinet

- 3D printed prototype cabinet