

# LTE Cat-M Network I/O Things

## I/O

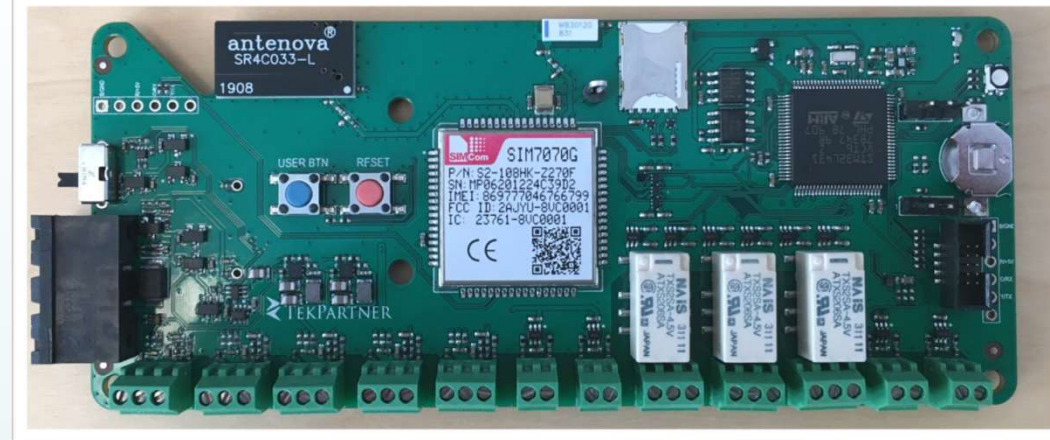
- 5 x Input (each: Analog, Counter or Binary Level capable)
- 7 x Output (2x TTL, 3x Relay, 2x PWM/TTL)
- 2 x Keys (User & Reset)
- 4 x Status LEDs (1x RGB, 1x G)
- 1 x TTL UART

## Mobile Network:

- SIM7070G module with Worldwide
  - NB IoT Release 14 (NB2)
  - LTE Cat-M
  - GPRS (2G) fallback
  - GNSS
- Board mounted Network and GNSS Antenna
- Nano-SIM card holder

## Power Supply

- External 5VDC or
- 3xAA (compartment on the back)



## MCU:

- STM32L431 (80 MHz ARM Cortex M4)
- RTC Battery Backup

## Memory:

- 64 KB RAM
- 256 KB Program FLASH
- 32 KB FRAM (i2c) – rapidly changes non-volatile persistent data
- 2 MB Data FLASH (spi) – rarely changes non-volatile persistent data

## Cabinet

- 3D printed prototype cabinet